

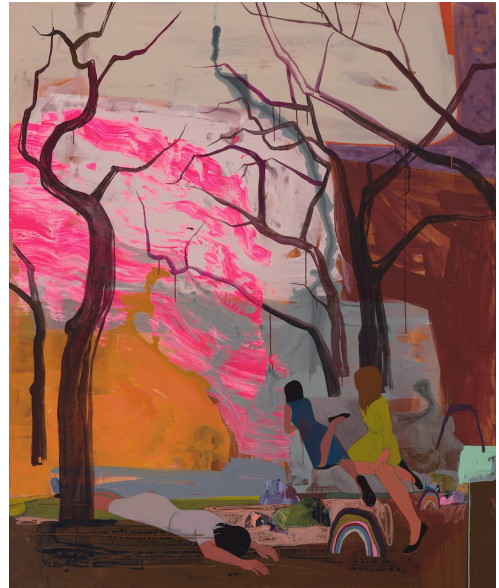
HASHIMOTO CONTEMPORARY

FOR IMMEDIATE RELEASE:

Cognitive Dissonance

a solo exhibition by Seonna Hong
December 13th, 2025 - January 10th, 2026

NEW YORK CITY - Hashimoto Contemporary is pleased to present *Cognitive Dissonance*, a solo exhibition by Los Angeles-based artist Seonna Hong. In her latest solo exhibition, the artist's deeply introspective work functions as both visual journal and emotional terrain, tracing the patterns of contemporary life through abstraction, landscape, and gesture.



Viewing painting as a map of her internal experience, the artist embeds emotion into the landscapes themselves within the striations of the sky, jagged rock and shifting atmospheres. Figures appear as anchors or witnesses: sometimes they represent the artist, sometimes no one particular person at all. The works in *Cognitive Dissonance* emerge from a period of heightened cognitive and emotional tension shaped by political unrest in the U.S., global conflict, environmental catastrophe, and the persistence of connection, tenderness, and daily ritual.

The exhibition moves between capturing a sense of urgency and restraint. Hong throws, scrapes, and pushes paint in moments of overwhelm, then slows into thin, delicate "quilted" washes applied with meditative precision. The artist draws a parallel to *bojagi*, the Korean textile tradition that pieces fragments into functional abstraction, an act of both rupture and repair. Scale operates as another emotional register: large works capture physical intensity, while smaller paintings return to the immediacy of her early studies on hardware store paint chips.

Cognitive Dissonance holds the contradictions of our present day moment: chaos and quiet, grief and compassion, the spectacular and the mundane. It is a record of trying to remain human, engaged, and honest as the world feels simultaneously too much and yet also not enough.

Join us for the opening of *Cognitive Dissonance* on Saturday, December 13th with a reception from 6pm - 8pm. The artist will be in attendance. In conjunction with the exhibition, we will be releasing a new limited edition print, first available exclusively in person at the opening followed by an online release at a later date. The exhibition will run through Saturday, January 10th.

For additional information, images, or press requests, please email info@hashimotocontemporary.com

HASHIMOTO CONTEMPORARY

WHAT:

Cognitive Dissonance

a solo exhibition by Seonna Hong

WHERE:

Hashimoto Contemporary

54 Ludlow Street

New York, NY 10002

WHEN:

Opening night reception: Saturday, December 13th from 6pm - 8pm

On view through Saturday, January 10th

RELEVANT LINKS:

Seonna Hong: <https://www.seonnahong.com/>

Hashimoto Contemporary: <https://www.hashimotocontemporary.com/>

ABOUT THE ARTIST:

Seonna Hong was born and raised in Southern California. She graduated with a B.A. in Art from Cal State University Long Beach and continued to hone her craft teaching art to children for several years. Her paintings are quietly narrative and often autobiographical and no doubt influenced by her time teaching as well as her work in TV and Feature animation. In 2004, she received an Emmy Award for Individual Achievement in Production Design for her work on "My Life as a Teenage Robot." In 2006, she was the recipient of the Joan Mitchell Foundation Grant. Her illustrated book, 'Animus' is in its third printing and according to Ken Johnson (The New York Times), "...the paintings are beautifully made and the imagery is mysteriously touching." Hong continues to show her work in shows and galleries around the world and is represented by Hashimoto Contemporary.

ABOUT THE GALLERY:

Hashimoto Contemporary is a contemporary art gallery originally founded in 2013 by Ken Harman Hashimoto. After joining the team in 2017, the gallery announced Jennifer Rizzo as a partner in 2023. Our roster consists of an eclectic blend of emerging and established contemporary artists working primarily within our respective local communities. You can find us at the Minnesota Street Project (San Francisco) and the Lower East Side (New York City) where our spaces put on new new exhibitions monthly.